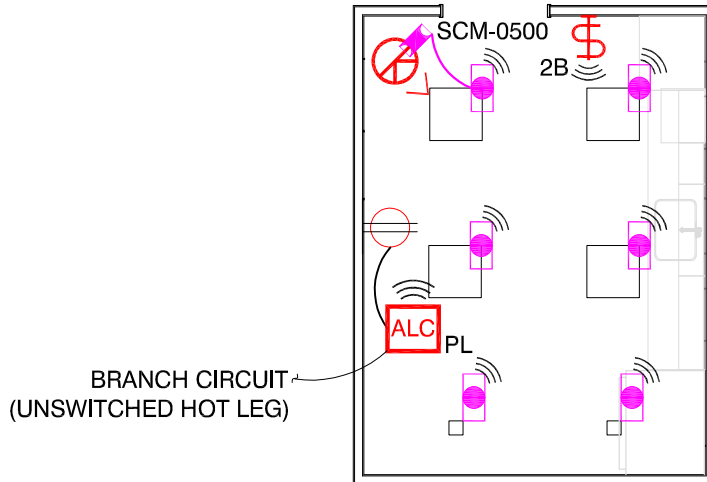


BREAK ROOM ASHRAE 90.1-2010 INDIVIDUAL LUMINAIRE CONTROL WIRELESS SYSTEM



SEQUENCE OF OPERATION

- 1.) AUTO ON TO 50% VIA OCCUPANCY SENSOR AND CONTROLLED RECEPTACLES WHEN OCCUPANCY DETECTED.
- 2.) MANUAL ON/OFF AND FULL RANGE DIMMING CONTROL OF GENERAL LIGHTING.
- 3.) AUTO OFF ALL LIGHTING AND CONTROLLED RECEPTACLES WITHIN 30 MINUTES OF OCCUPANTS LEAVING.

DESIGN CONSIDERATIONS

- 1.) ENCELIUM BACKBONE IS NEEDED VIA SYSTEM SUPPORT UNIT (SSU) ALONG WITH A NETWORK SWITCH. (REF DATA SHEET. LMS054)
- 2.) WIRELESS MANAGER (WM) IS NEEDED WHICH CAN ACCOMMODATE UP TO 100 WIRELESS DEVICES. (REF DATA SHEET. LMS102)
- 3.) IF BATTERY OPERATED WALL STATION IS NOT PREFERRED, YOU CAN USE A CONNECTED GREENBUS WALL STATION BY TETHERING OFF A GREENBUS CABLE FROM WALC OR WCM GREENBUS PORT. (REF DATASHEET. LMS056)
- 4.) IF EMERGENCY UL924 RATED DEVICE IS REQUIRED, WIRELESS MANAGER (WM) IS RATED FOR CENTRAL SENSE, IF LOCAL SENSE IS REQUIRED A THIRD-PARTY DEVICE WILL BE NEEDED. (REF WIRING DIAGRAM. LCM OR ALC FOR UL924).
- 5.) WHEN THE PRIMARY SIDELIGHT AREA IS 250FT² OR LARGER, IT MUST HAVE AUTOMATIC DAYLIGHT RESPONSIVE CONTROLS INSTALLED FOR ALL GENERAL LIGHTING IN THAT AREA.

TYPICAL DESIGN WITH CONTROL INTENT

ILLUSTRATION ONLY, ELECTRICAL CONTRACTOR RESPONSIBLE FOR APPLICATION SPECIFIC WIRING

LEGEND - ENCELIUM SYSTEM WIRELESS COMPONENTS

QTY	SYMBOL	DESCRIPTION
1	 SCM-0500	OCCUPANCY/VACANCY SENSOR PIR/ULTRASONIC MULTI-TECH, 180 DEG, 500 SQ. FT. COVERAGE, LOW VOLTAGE, CEILING MOUNT OCCUPANCY/VACANCY, W/ENCELIUM SENSOR INTERFACE MODULE (SIM)
1	 2B	ENCELIUM WIRELESS 2-BUTTON SWITCH/DIMMER (WALL CONTROLLER), CONFIGURABLE
6		WIRELESS CONTROL MODULE (WCM)
1	 ALC PL	WIRELESS AREA LIGHTING CONTROLLER (WALC), FOR PLUG LOAD. FOR ASHRAE 2013 & 2016
1		SENSOR INTERFACE MODULE (SIM)
		GREENBUS CABLE. PRE-TERMINATED (18AWG X 2) MAXIMUM LENGTH OF TETHERED CABLE IS 100FT