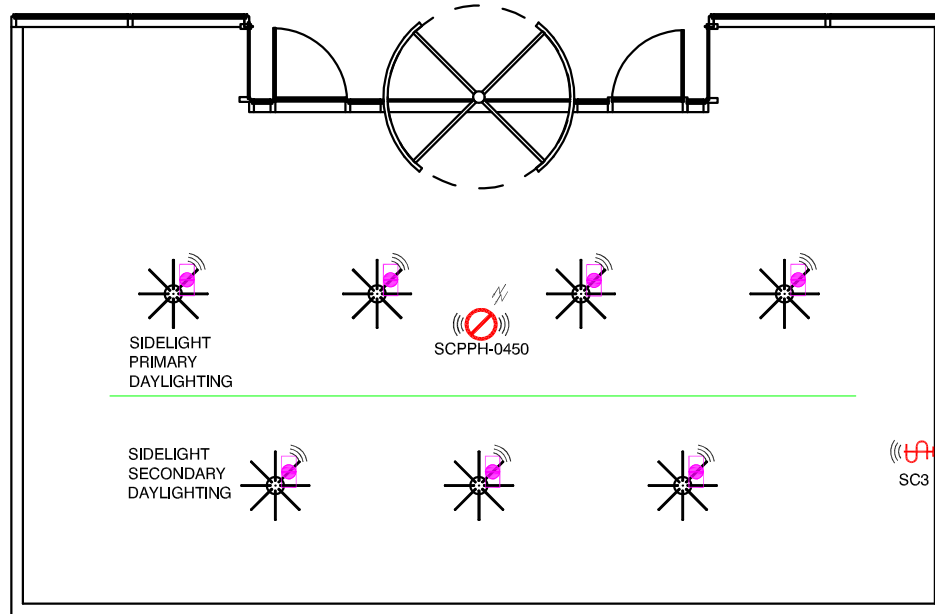


## ATRIUM ASHRAE 90.1-2010 INDIVIDUAL LUMINAIRE CONTROL WIRELESS SYSTEM



### SEQUENCE OF OPERATION

- 1.) MANUAL ON/OFF AND FULL RANGE DIMMING CONTROL OF GENERAL LIGHTING WITH WALL SWITCH. OPTIONAL 3 SCENE CONTROL.
- 2.) TIME SCHEDULE TURNS LIGHTS ON TO 50% DURING NORMALLY OCCUPIED HOURS.
- 3.) AUTOMATIC DAYLIGHT RESPONSIVE CONTROL FOR SIDE LIGHTING.
  - NOT REQUIRED IF ROOM HAS <240SQFT OF GLAZING OR LIGHTING LOADS <120W, IN THE SIDELIT ZONE.

### DESIGN CONSIDERATIONS

- 1.) ENCELIUM BACKBONE IS NEEDED SYSTEM SUPPORT UNIT (SSU) ALONG WITH A NETWORK SWITCH. (REF DATA SHEET. LMS054)
- 2.) WIRELESS MANAGER (WM) IS NEEDED WHICH CAN ACCOMMODATE UP TO 100 WIRELESS DEVICES. (REF DATA SHEET. LMS102)
- 3.) IF BATTERY OPERATED WALL STATION IS NOT PREFERRED. YOU CAN USE A CONNECTED GREENBUS WALL STATION BY TETHERING OFF A GREENBUS CABLE FROM WALC OR WCM GREENBUS PORT.
- 4.) IF EMERGENCY UL924 RATED DEVICE IS REQUIRED, WIRELESS MANAGER (WM) IS RATED FOR CENTRAL SENSE, IF LOCAL SENSE IS REQUIRED A THIRD-PARTY DEVICE WILL BE NEEDED. (REF WIRING DIAGRAM. LCM OR ALC FOR UL924).

### TYPICAL DESIGN WITH CONTROL INTENT

ILLUSTRATION ONLY, ELECTRICAL CONTRACTOR RESPONSIBLE FOR APPLICATION SPECIFIC WIRING.

### LEGEND - ENCELIUM SYSTEM WIRELESS COMPONENTS

QTY	SYMBOL	DESCRIPTION
1	 SCPPH-0450	ENCELIUM WIRELESS OCCUPANCY SENSOR, PIR, 360DEG, 450 SQ.FT. COVERAGE. SELF-ADJUSTING, LOW VOLTAGE, CEILING MOUNT. WITH INTEGRATED DAYLIGHT SENSOR (☀) FEATURE CAN BE ENABLED/DISABLED VIA POLARIS
1	 SC3	ENCELIUM WIRELESS 3-SCENE CONTROLLER (WALL CONTROLLER), 3-SCENES, CONFIGURABLE.
7		WIRELESS CONTROL MODULE (WCM)