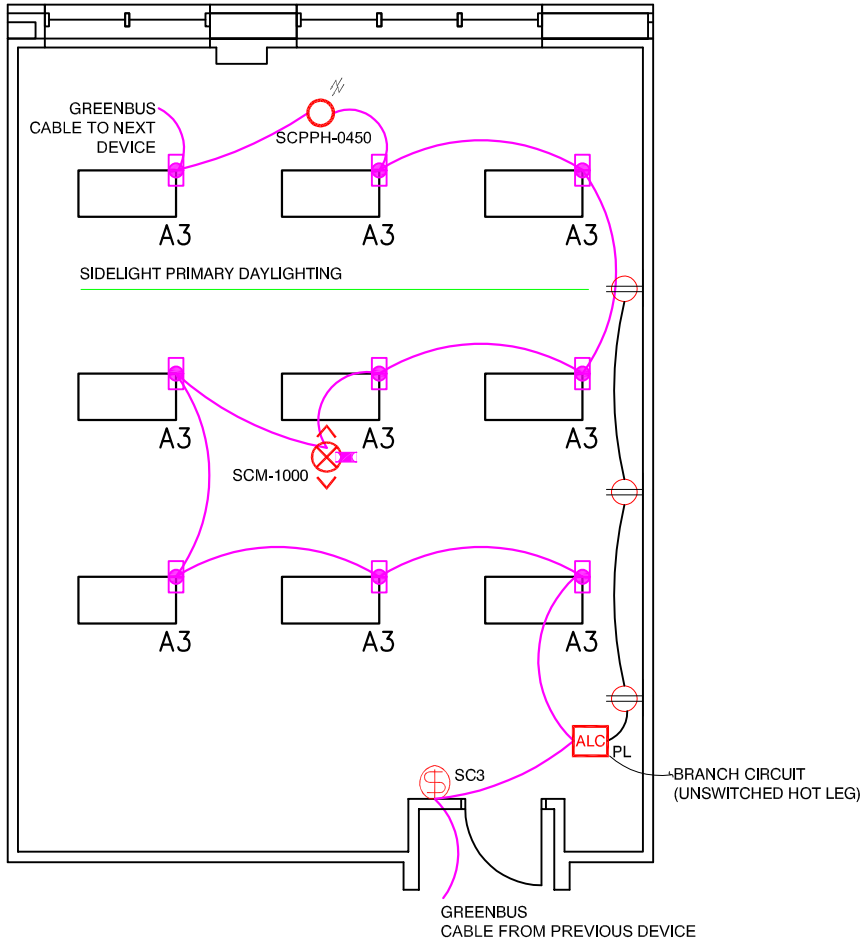


CLASSROOM  
ASHRAE 90.1-2010  
INDIVIDUAL LUMINAIRE CONTROL  
WIRED SYSTEM


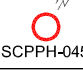







SEQUENCE OF OPERATION  
 1.) AUTO ON TO 50% OR CONTROLLED MANUALLY WHEN OCCUPANCY DETECTED. TURN OFF AFTER VACANCY OF 30MINS.  
 2.) MANUAL ON/OFF AND FULL RANGE DIMMING CONTROL OF GENERAL LIGHTING WITH WALL SWITCH. OPTIONAL 3 SCENE CONTROL.  
 3.) AUTOMATIC DAYLIGHT RESPONSIVE CONTROL FOR SIDE LIGHTING.  
 4.) AUTO OFF ALL LIGHTING AND CONTROLLED RECEPTACLES WITHIN 30 MINUTES OF OCCUPANTS LEAVING.

DESIGN CONSIDERATIONS  
 1.) ENCELIUM BACKBONE IS NEEDED VIA SYSTEM SUPPORT UNIT (SSU) ALONG WITH A NETWORK SWITCH. (REF DATA SHEET. LMS054)  
 2.) WIRED MANAGER (M) IS NEEDED WHICH CAN ACCOMMODATE UP TO 800 INDEPENDENT DEVICES DEPENDENT. (REF DATA SHEET. LMS093)  
 3.) IF EMERGENCY UL924 RATED DEVICE IS REQUIRED, WIRED MANAGER(M) IS RATED FOR CENTRAL SENSE, IF LOCAL SENSE IS REQUIRED A THIRD-PARTY DEVICE WILL BE NEEDED. (REF DATA SHEET. 1ESRN)

TYPICAL DESIGN WITH CONTROL INTENT ILLUSTRATION ONLY, ELECTRICAL CONTRACTOR RESPONSIBLE FOR APPLICATION SPECIFIC WIRING..

LEGEND - ENCELIUM SYSTEM GREENBUS COMPONENTS

| QTY | SYMBOL  | DESCRIPTION   |
|-----|---|---|
| 1   | <br>SCM-1000   | OCCUPANCY SENSOR, PIR/ULTRASONIC MULTI-TECH 360DEG WIDE VIEW, 1000SQFT COVERAGE, LOW VOLTAGE, CEILING MOUNT. W/ENCELIUM SIM   |
| 1   | <br>SCPPH-0450 | GREENBUS PHOTOCELL SENSOR 360 DEG, LOW VOLTAGE, CEILING MOUNT, BUILT-IN OCCUPANCY SENSOR, PIR, 450 SQ.FT COVERAGE(OPTIONAL), NO SIM REQUIRED.<br>( / ) - PHOTOCELL ACTIVE |
| 1   | <br>SC3        | ENCELIUM LOW VOLTAGE - SCENE CONTROL WALL STATION (SC3) - THREE SCENES  |
| 9   |                | LUMINAIRE CONTROL MODULE (LCM)  |
| 1   |                | AREA LIGHTING CONTROLLER - HEAVY DUTY RELAY FOR PLUG LOAD (ALC)   |
| 1   |                | SENSOR INTERFACE MODULE (SIM)   |
|     |                | GREENBUS CABLE. PRE-TERMINATED (18AWG X 2) MAXIMUM CONNECTED LENGTH OF WIRING IS 2500FT. PER CHANNEL  |