

Product Name

Product Description

Date: _____

Quantity: _____

Company: _____

Project: _____



The Encelium **WCMS (Wireless Ceiling Mount Sensors)** consists of Passive Infrared (PIR) and Photo Sensors which collect occupancy and daylight information from a lighted space and communicate collected data to the Encelium X Lighting Control System over a wireless mesh network.

These Wireless PIR/Photo Sensors have been recognized as some of the smallest in the industry. Powered by 2 AA batteries with an extended battery life of 10 years, these sensors are intended to be installed onto a ceiling surface or electrical box.

Three configurations are available: up to 42 sq m (450 sq ft) range, up to 140 sq m (1,500 sq ft) range, or a high-bay option that covers up to 260 sq m (2,800 sq ft) with a mounting height of up to 12 m (40 ft). These sensors feature tool-less mounting options for easy installation and offer masking options to maximize control flexibility.

Works with

- Encelium X
- ▶ Wireless



Key Features & Benefits

- Available in three coverage options – 42 sq m (450 sq ft), 140 sq m (1,500 sq ft), and high-bay option
- Simple installation, using magnetic mounting and 360° directional flexibility
- Reposition sensor with no noticeable substrate marks
- Setup and configuration via Polaris™ software
- Wireless sensor offer 10-year battery life with automatic battery monitoring via Polaris software

ENCELIUM

Specifications

SENSING AND CONTROL

Sensing

- Passive Infrared (PIR) Sensor
- Photo Sensor

Light Sensor Operating Range

- 0 to 1,000 Lux
- Shields included (no opening of sensor required)

Control

- Wireless Communication

Batteries

- 2-AA Alkaline batteries (provided)
- Exchangeable and readily accessible

ELECTRICAL

Radio Frequency

- 2.4 GHz

ENVIRONMENTAL

Operating Temperature

- Standard Range (SR) and Extended Range (ER) Sensors
0° to 40°C (32° to 104°F)
- High-Bay (HB) Sensor
0° to 60°C (32° to 140°F)

Relative Humidity

- 0% to 95% non-condensing, for indoor use only

PHYSICAL

Base Diameter

- 85.5 mm (3.37 inches)

Height

- 28.6 mm (1.13 inches) – SR Sensor
- 26.2 mm (1.03 inches) – ER and HB Sensors

Weight

- 110 g (3.9 oz)

Housing Color

- Matte White

Housing Material

- UV Stabilized Plastic

Mounting Options

- Magnetic Mount
- Surface Mount
- Ceiling Tile Mount (requires optional mounting accessory kit)
- Junction Box Mount (requires optional mounting accessory kit)
- High-Bay Mount (requires optional mounting accessory kit)

Mounting Height

- 2.4 to 3.7 m (8 to 12 ft) – SR and ER Sensors
- Up to 12 m (40 ft) – HB Sensor

WARRANTY

- For warranty details, refer to the full warranty documentation at encelium.com

CERTIFICATIONS & SAFETY

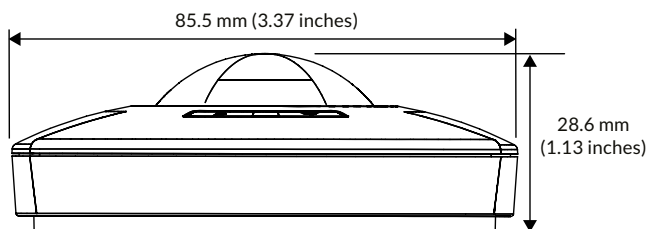
Approbations

- cUL Listed (UL 916)
- CE
- FCC Part 15/ICES-003
- RoHS Compliant
- Meets ASHRAE Standard 90.1 and CEC Title 24 requirements

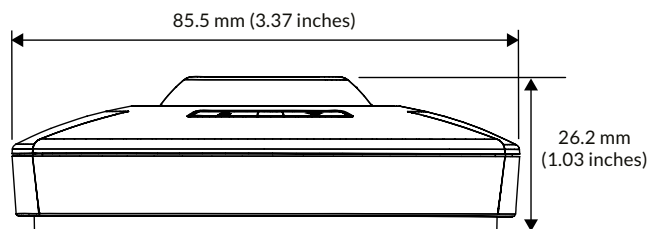


Dimensions

Standard Range Sensor



Extended Range Sensor
High-Bay Sensor



Ordering Information

Catalog Number	Description	Approbations	Sensing Technologies	Coverage	Sensing Angle
EN-SCPPH-0450-ZB	Wireless Ceiling Mount Sensor	UL and CE	PIR/Photo	42 m ² (450 ft ²)*	360°
EN-SCPPH-1500-ZB	Wireless Ceiling Mount Sensor	UL and CE	PIR/Photo	140 m ² (1,500 ft ²)*	360°
EN-SCPPH-HB-ZB	Wireless Ceiling Mount Sensor	UL and CE	PIR/Photo	See Notes**	360°
EN-SCPPH-MK-ZB	Mounting Accessory Kit	UL and CE	—	—	—

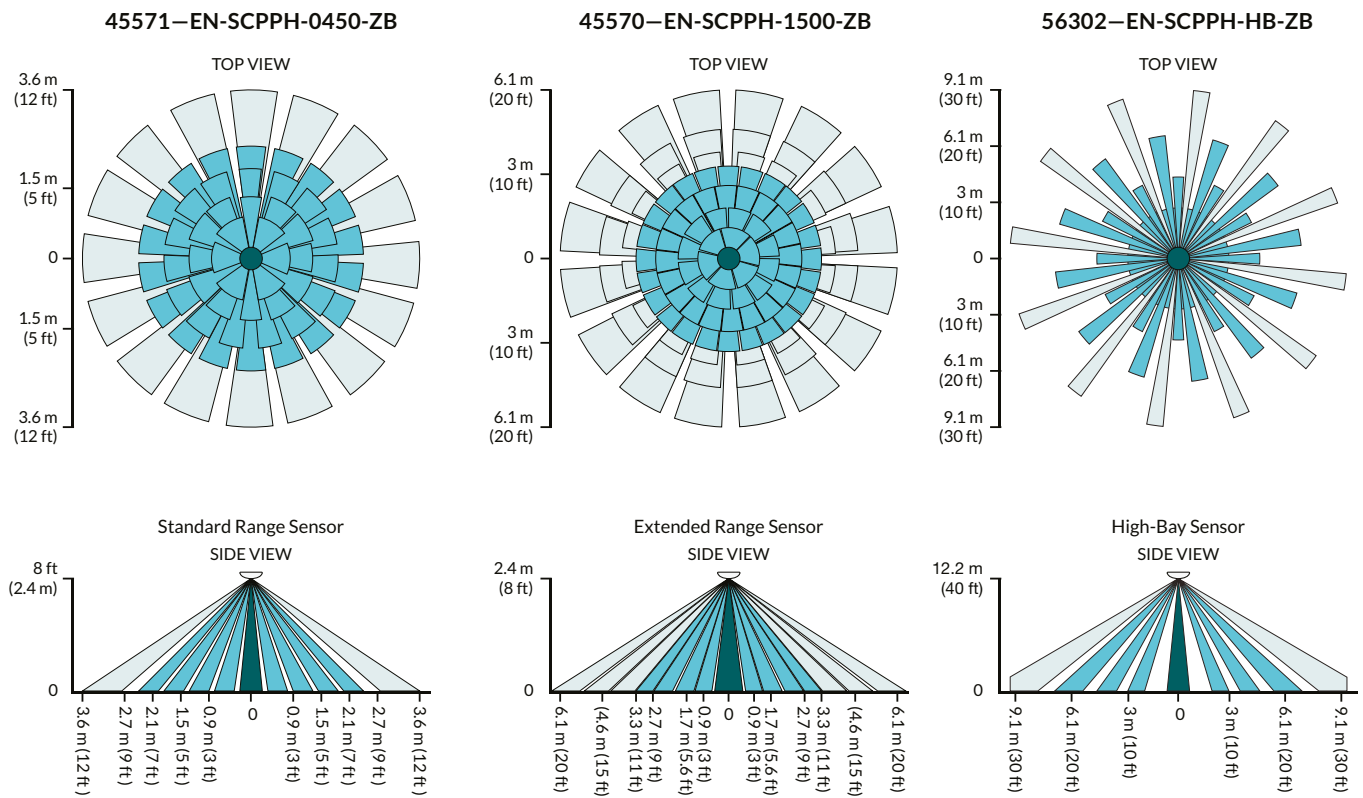
* Mounting Height: 8 to 12 ft (2.4 to 3.7 m)

** Dependent on mounting height

Sensor Mounting Height

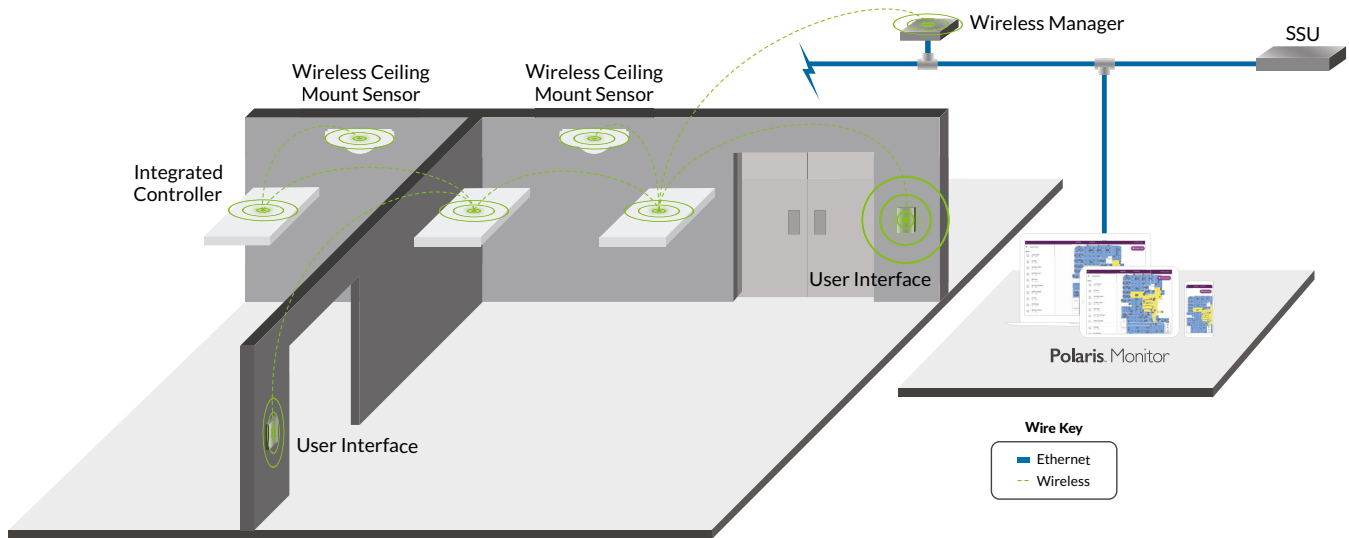
Mounting Height	Coverage
6 m (20 ft)	~ 102 m ² (1,100 ft ²)
9 m (30 ft)	~ 167 m ² (1,800 ft ²)
12 m (40 ft)	~ 260 m ² (2,800 ft ²)

Sensor Coverage



Wireless System Overview

This illustration shows how each component is easily integrated into the Encelium X Lighting Control System.



Mounting Options

Ceiling Tile Mount, Junction Box Mount, and High-Bay Mount requires optional mounting kit (sold separately).

