

# SensiLUM

## Wireless Integrated Sensor



The SensiLUM wireless integrated sensor family enables real-time occupancy detection, daylighting harvesting, and individual or group control of luminaires. Fully compatible with the Encelium X Light Management System, SensiLUM fits into an industry-standard 0.5 inch (Pg-7) knockout in any luminaire.

SensiLUM sensors offer 0-10V dimming, DALI, and DEXAL (Data Exchange for Advanced Lighting) control options.

The SensiLUM together with Encelium X create a sensor-rich smart network that customers can leverage as their technology infrastructure for entry into smart building and IoT applications.

Digital lighting solutions may qualify for commercial lighting rebates on new construction or retrofit projects.

Date: \_\_\_\_\_

Quantity: \_\_\_\_\_

Company: \_\_\_\_\_

Project: \_\_\_\_\_

### Key Features & Benefits

- Unique form factor enables easy integration in any architectural luminaire
- Enables occupancy detection and daylight harvesting
- Compatible with both 0-10V (with Dim-to-OFF) and DALI based LED drivers
- Seamlessly enable tunable white applications with luminaire integrated control for 2-CH DALI Type 8 LED driver
- Adjustable dual-axis shutter allows end-user to fine-tune field of view
- UL924 Listed for Control of Emergency Lighting  
UL2043 Plenum Rated
- Works with:
  - Encelium X
  - Encelium Extend

## Specifications

### SENSING AND CONTROL

#### Sensing

- PIR, Photo Sensor

#### Control Output

- 0-10V / DALI / DEXAL<sup>1</sup>
- Controls up to (4) DEXAL or (10) 0-10 V drivers

#### Wireless Control

- Zigbee®

#### Wireless Range

- 150 ft (45.7 m) line of sight

### ELECTRICAL

#### Operating Voltage

- 12-20V supplied from the LED driver

#### Operating Power

- <0.3 W in all operation

### ENVIRONMENTAL

#### Ambient Temperature

- Ta maximum 140°F (60°C)

### PHYSICAL

#### Dimensions

- 3.37 inch (85.49 mm)

#### Application Height

- Up to 20 ft (6.1 m)

#### Installation

- Fits in a standard 0.5 inch (Pg-7) knockout

#### Lifetime

- 150 K hours MTTF

#### Field View

- 100° field view coverage

#### Packaging

- QTY 30 pieces per case

### WARRANTY

- For warranty details, refer to the full warranty documentation at [www.encelium.com](http://www.encelium.com)

### CERTIFICATIONS & SAFETY

#### Approbations

- UL Listed, Class 2, Plenum Rated
- UL2043 Plenum Rating
- FCC part 15 Class A

#### Environmental Suitability

- IP20



## Ordering Information

Item Number	Ordering Code	Description	Communication Network	Dimming Protocol
58286	EN-CLM-PIR-DD-ZB	SensiLUM Wireless Integrated Sensor	Zigbee Wireless	0-10V/DEXAL

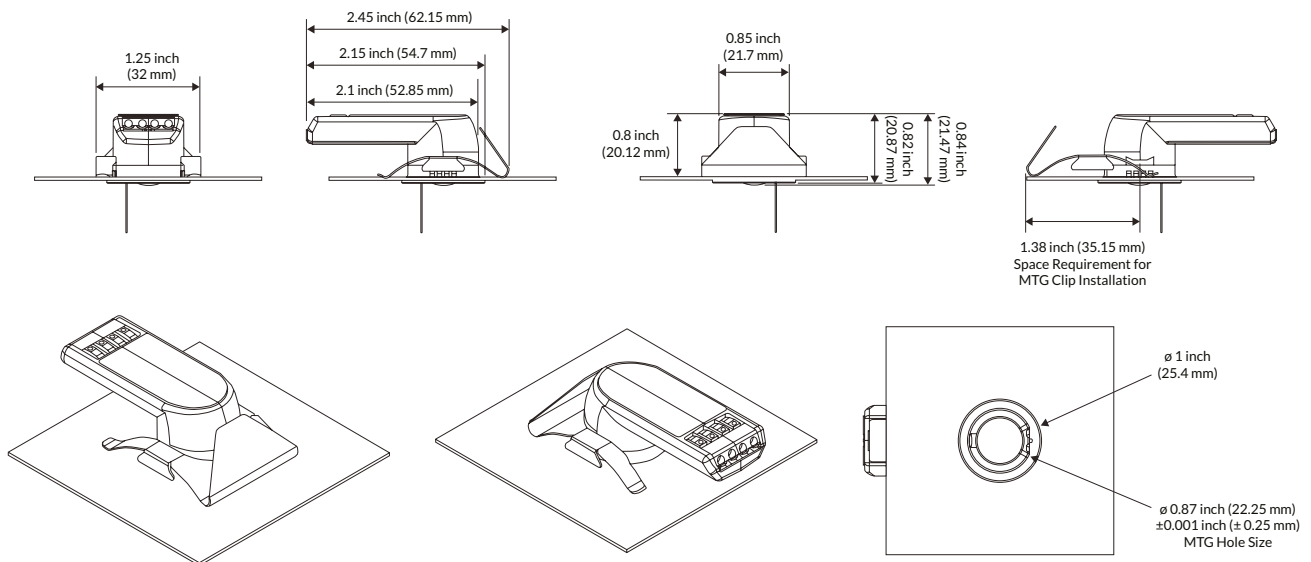
## Power Supply Compatibility

SensiLUM	Linear (010V) AUX Models Only	OPTOTRONIC Driver Linear (DEXAL)	Compact (0-10V) AUX Models Only
NAED 58286	OTi20W, OTi30W, OTi48W, OTi50W, OTi85W	OTi30W, OTi50W, OTi85W	OTi25W, OTi40W, OTi55W

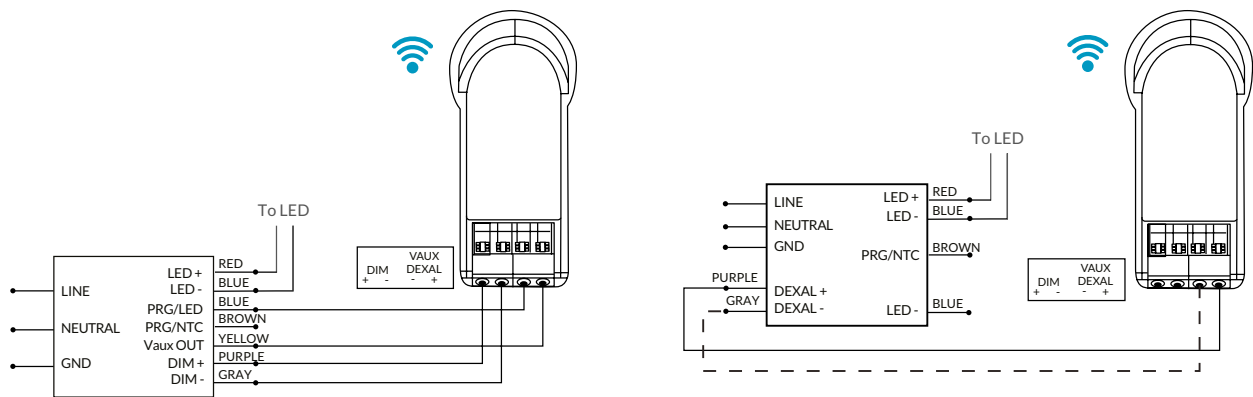
Footnotes:

<sup>1</sup> The sensor auto-detects between a 0-10V and DEXAL LED driver.

## Dimensions & Installation Diagrams



## Wiring Diagrams

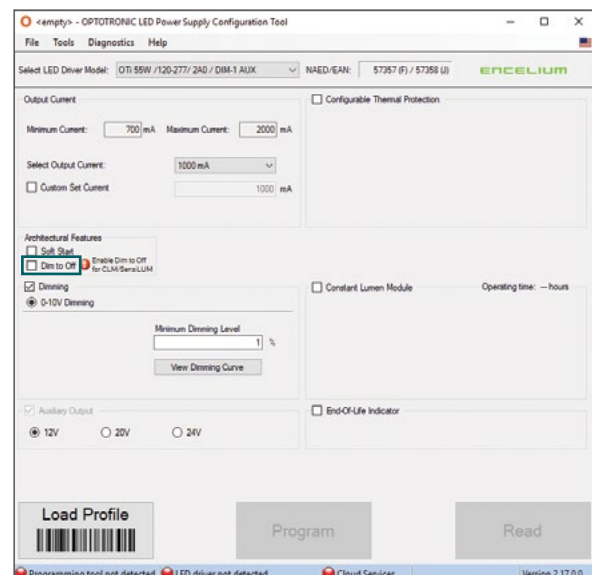


## LED Driver Configuration

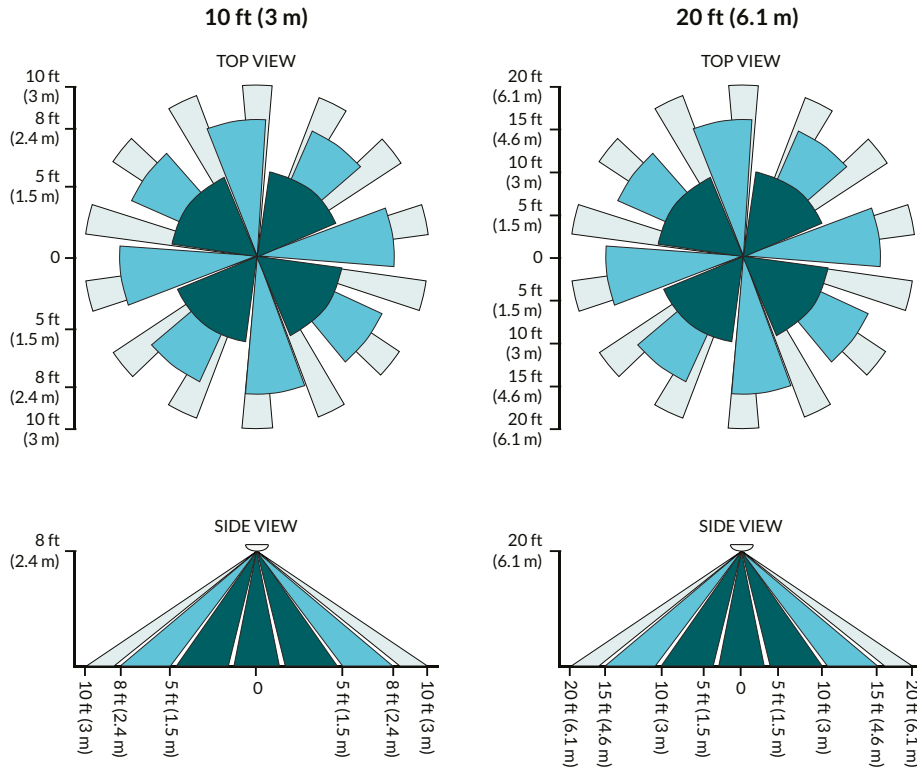
**Important: The LED driver must possess Dim-to-OFF capability, and it must be enabled when using with CLM DIM.**

If Dim-to-OFF is not enabled, then the CLM DIM will not be able to turn the light fixture ON/OFF.

If using DALI based LED Power Supplies, the dim-to-off feature must be enabled in the programming software. The default state of dim-to-off feature is disabled for out-of-the-box products.

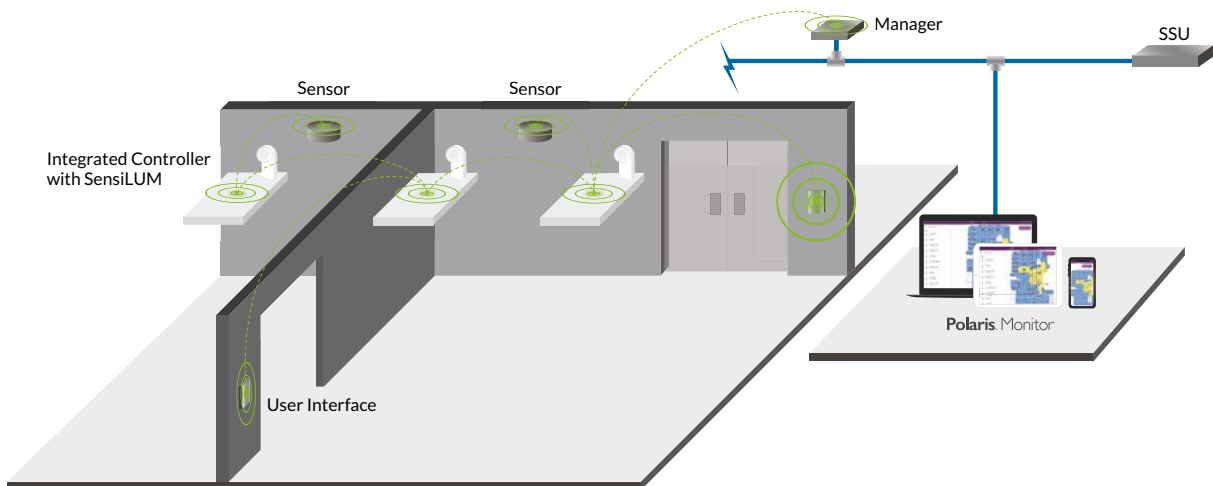


## Field-of-View



## Wireless System Overview

The SensiLUM Wireless Integrated Sensor allows luminaires to be wirelessly controlled. The Encelium X Wireless Manager sends dedicated commands wirelessly to each SensiLUM Sensor enabling individually controlled luminaires.



Copyright © 2021 Digital Lumens, Incorporated. All rights reserved. Digital Lumens, the Digital Lumens logo, We Generate Facility Wellness, SiteWorx, LightRules, Lightelligence, Encelium, the Encelium logo, Polaris, GreenBus and any other trademark, service mark, or tradename (collectively "the Marks") are either trademarks or registered trademarks of Digital Lumens, Inc. in the United States and/or other countries, or remain the property of their respective owners that have granted Digital Lumens, Inc. the right and license to use such Marks and/or are used herein as nominative fair use. Due to continuous improvements and innovations, specifications may change without notice.